



FL90 1000W FLOOD

Design Features:

Die-Cast Aluminum housing for durability with Chromate Conversion Coating, Textured Bronze Finish
 Die-Cast Aluminium Lens Frame
 One Piece Anodized Aluminium Reflector
 Porcelain **MOGUL** 5KV Base Socket
 High Impact Tempered Glass Lens
 Adjustable Swivel or Slip Fitter Optional
 Meets **UL 1572** requirements for Wet Locations
 Ideal for **1000W** HPS or Metal Halide

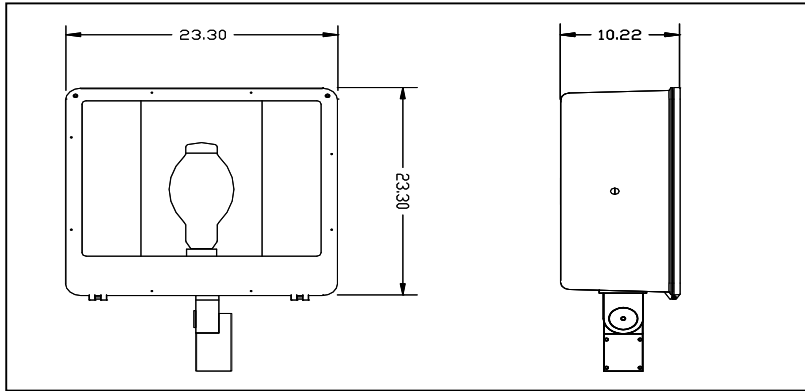
Applications:

Buildings, Parks, Signs, Backyards and Other General Flood Lighting Applications

Owner Benefits:

VALUE - high benefit to cost ratio with proven system design & components - **Made in USA**
 Full **One Year Warranty** - Environmentally friendly
 Each luminaire is tested before shipping
Lamp Included.

Nema Type 7H x 6V



EPA-1.09 FT CU DIMENSIONS
 20-25 LBS EA

ORDERING INFORMATION

	<u>Product</u>	<u>Wattage</u>	<u>Lamp</u>	<u>Voltage</u>	<u>Accessories</u>
Example:	<u>FL90SW</u>	<u>40</u> 400 WATT	<u>HPS</u> High Pressure Sodium	<u>480</u> 120 VOLT	<u>WG</u> Wire Guard

Ordering Options

<u>Product</u>	<u>Wattage</u>	<u>Lamp</u>	<u>Voltage</u>	<u>Accessories</u>
FL90 SW = SLIP FITTER MOUNT	40 = 400W 1X = 1000W	HP = HPS MH=Metal Halide INC=Incandescent	120 = 120V 208 = 208V 240 = 240V 277 = 277V 480 = 480V MT = 120/208/240/277	GS=Glare Shield WG=Wire Guard PC=Photocontrol BF=Baffle

Lamp Type	ANSI	Lamp Watts	Volts	Line Amps (Oprtn)	Input Watts	Circuit Type
HPS	S51	400	120/208/240/277/480	4.0 /2.2 /1.9 /1.6 /1.0	465	CWA
HPS	S52	1000	120/208/240/277/480	9.1 /5.4 /4.6 /4.1 /2.4	1048	CWA
Metal Halide	M59 OR H33	400	120/208/240/277/480	4.0 /2.3 /2.0 /1.7 /1.0	458	CWA
Metal Halide	M47 OR H36	1000	120/208/240/277/480	9.0 /5.3 /4.6 /4.0 /2.3	1060	CWA

Project: _____
 Date: _____
 Approved by: _____